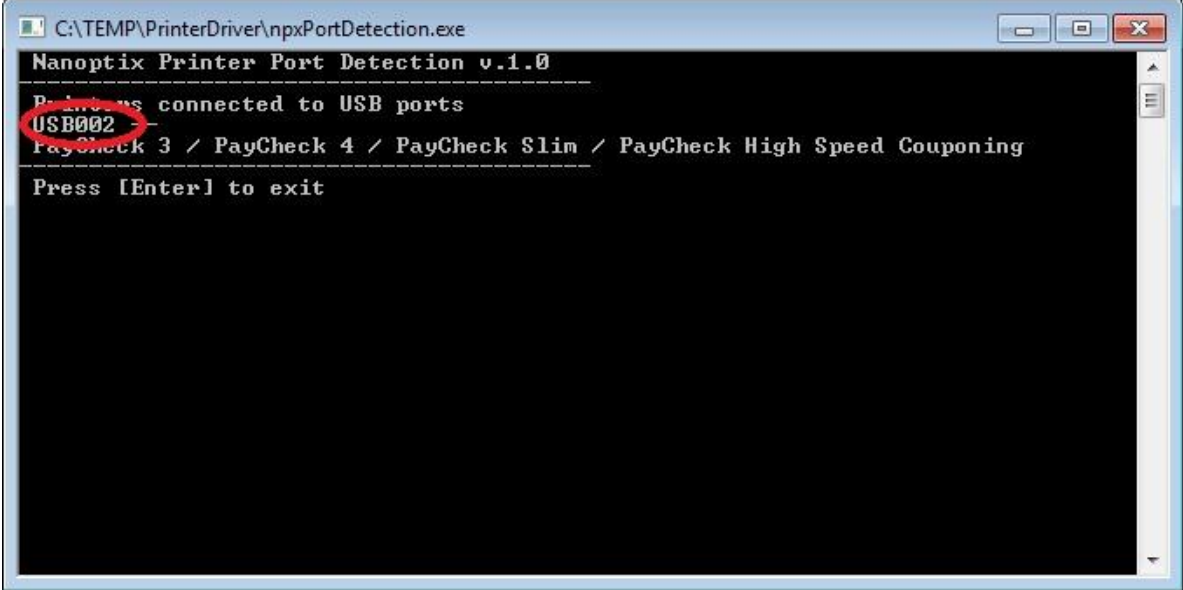


Installing the Nanoptix Printer Driver

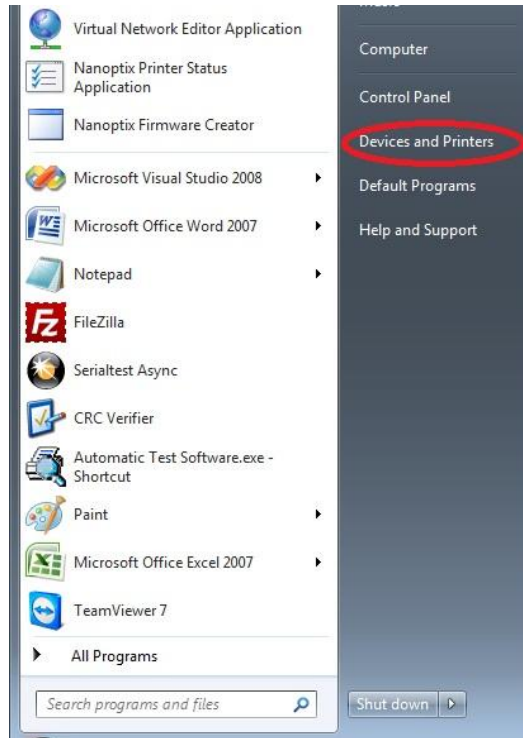
1. On our website download the latest Nanoptix Printer Driver package from <http://www.nanoptix.com/techsupport/files/Windows/PrinterDriver.zip>
2. If you are setting the printer up on Windows XP Embedded Edition please refer to the instructions in Appendix A before continuing.
3. Uncompress the file **PrinterDriver.zip** package into a known location, for example ("C:\TEMP")

If you are connecting the printer via USB, then in the extracted directory, execute the npxPortDetection.exe application. Please note the USB Port for your Printer. In the screenshot below the printer is on **USB002**

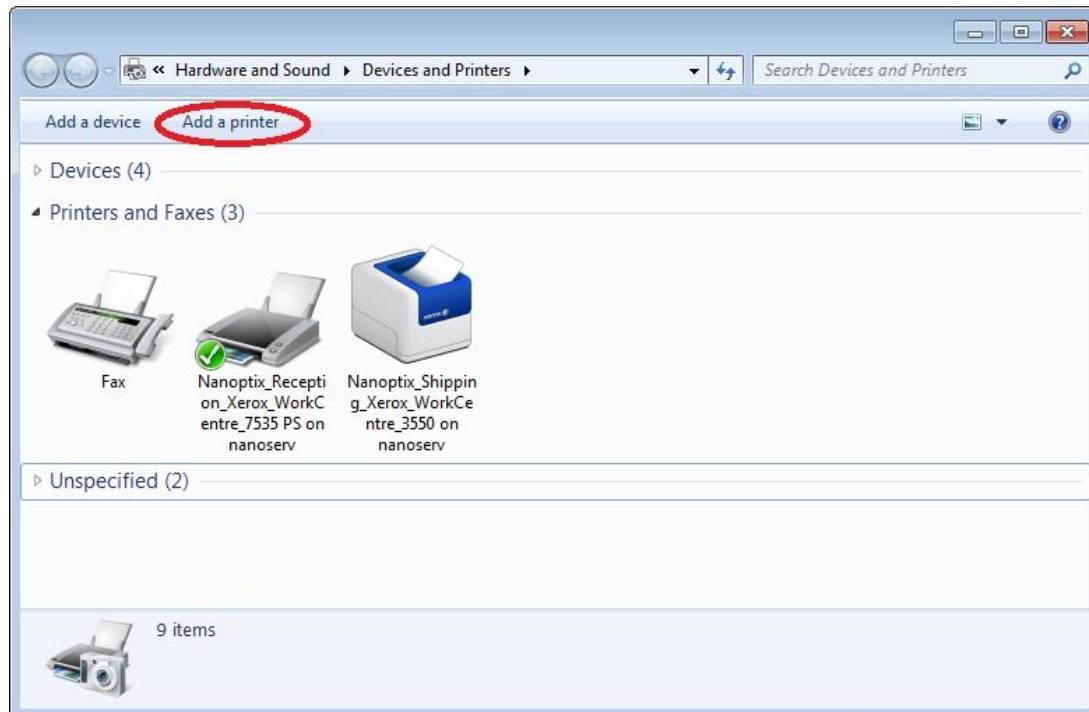


```
C:\TEMP\PrinterDriver\npxPortDetection.exe
Nanoptix Printer Port Detection v.1.0
-----
Printers connected to USB ports
USB002
PayCheck 3 / PayCheck 4 / PayCheck Slim / PayCheck High Speed Couponing
-----
Press [Enter] to exit
```

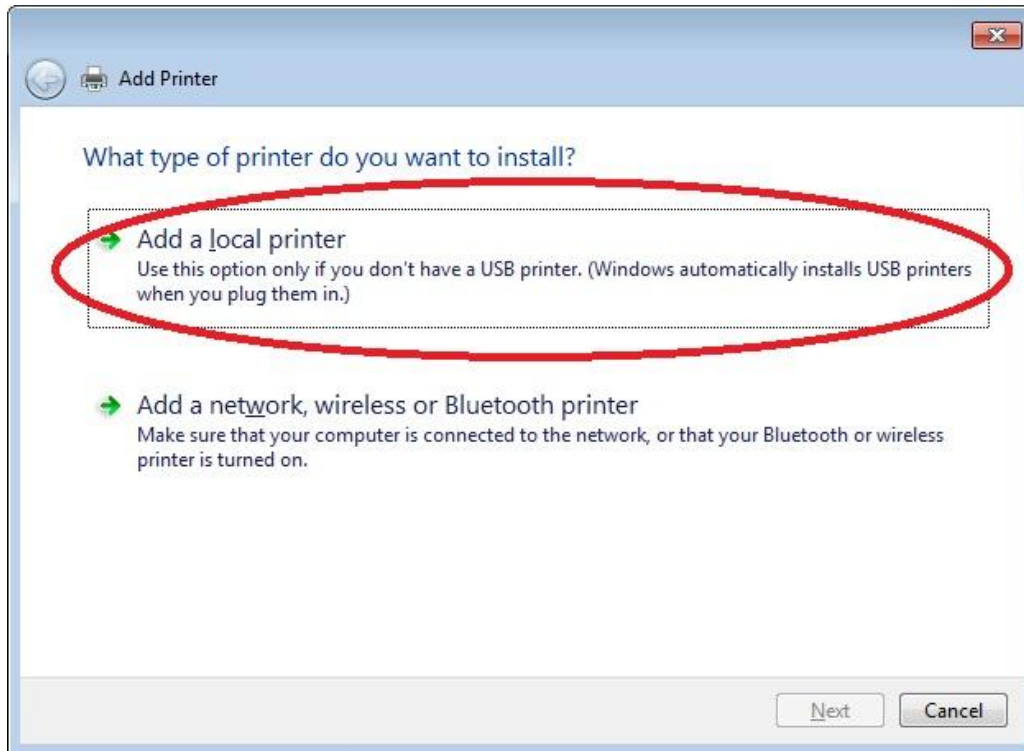
4. Click on Start->Devices and Printers.



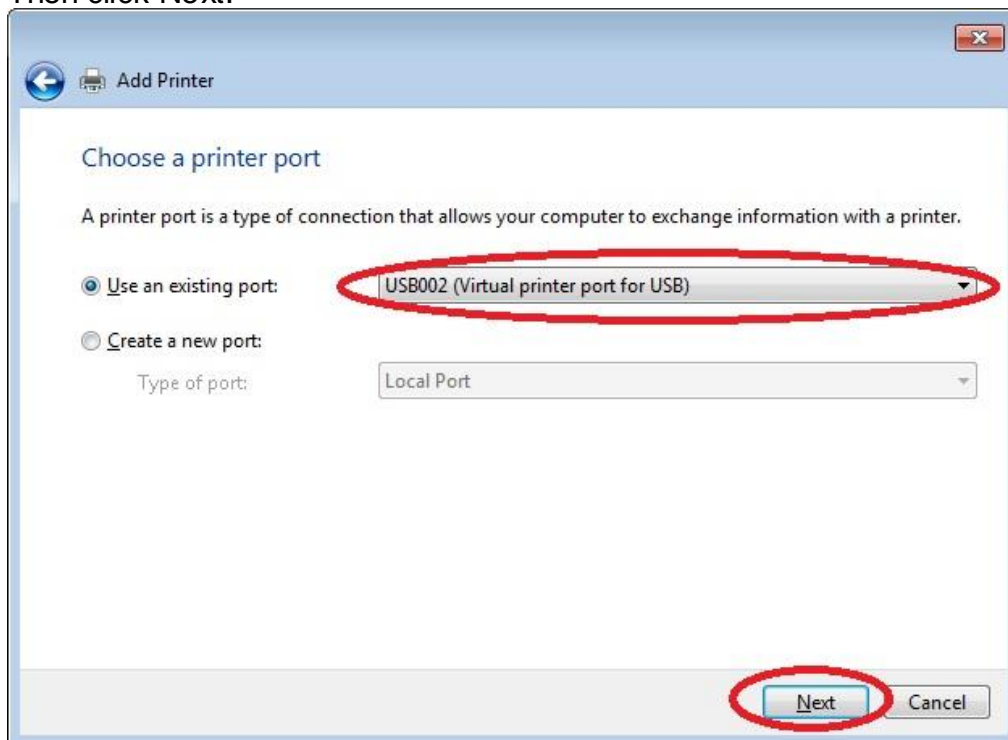
5. Then in the Device and Printers window click on Add a Printer.



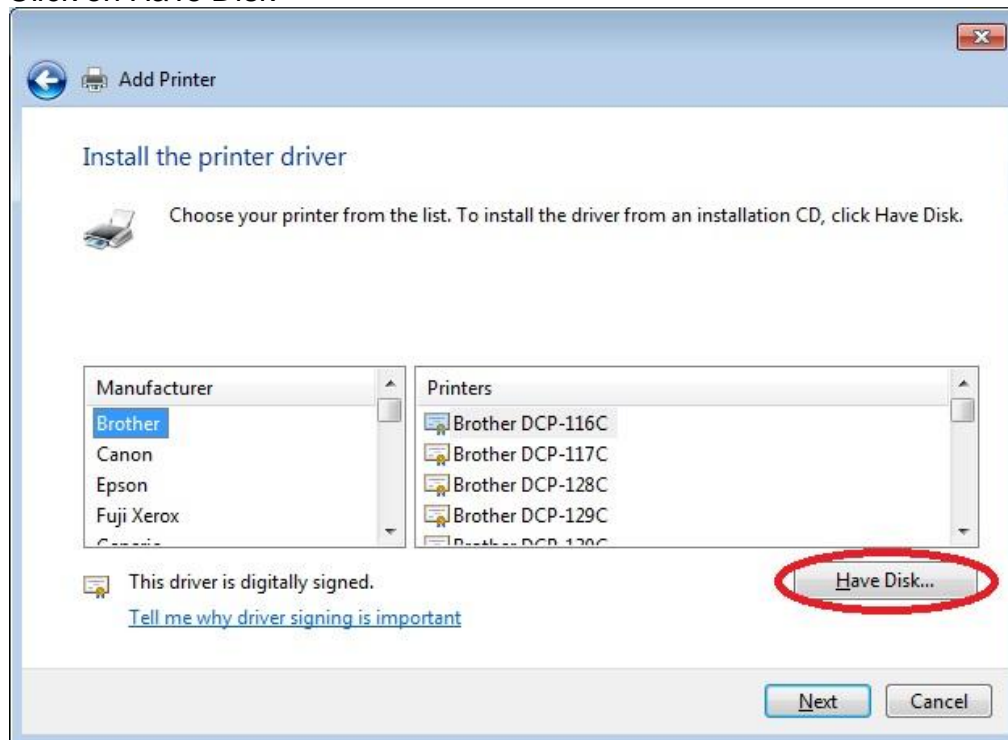
6. Click on Add a local Printer



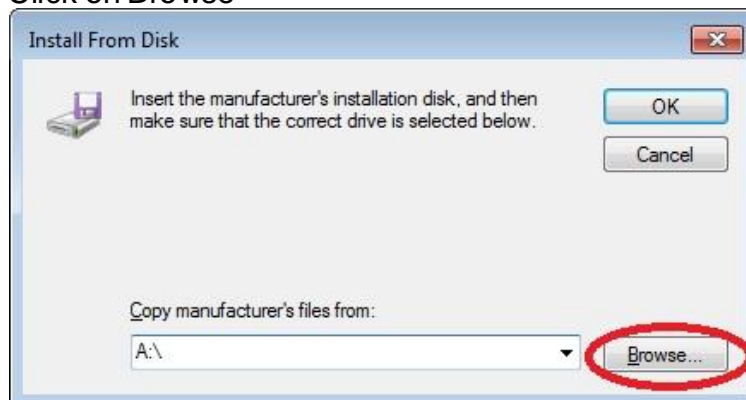
7. Select the appropriate port, for USB printer select the port that was detect in step 2. Then click Next.



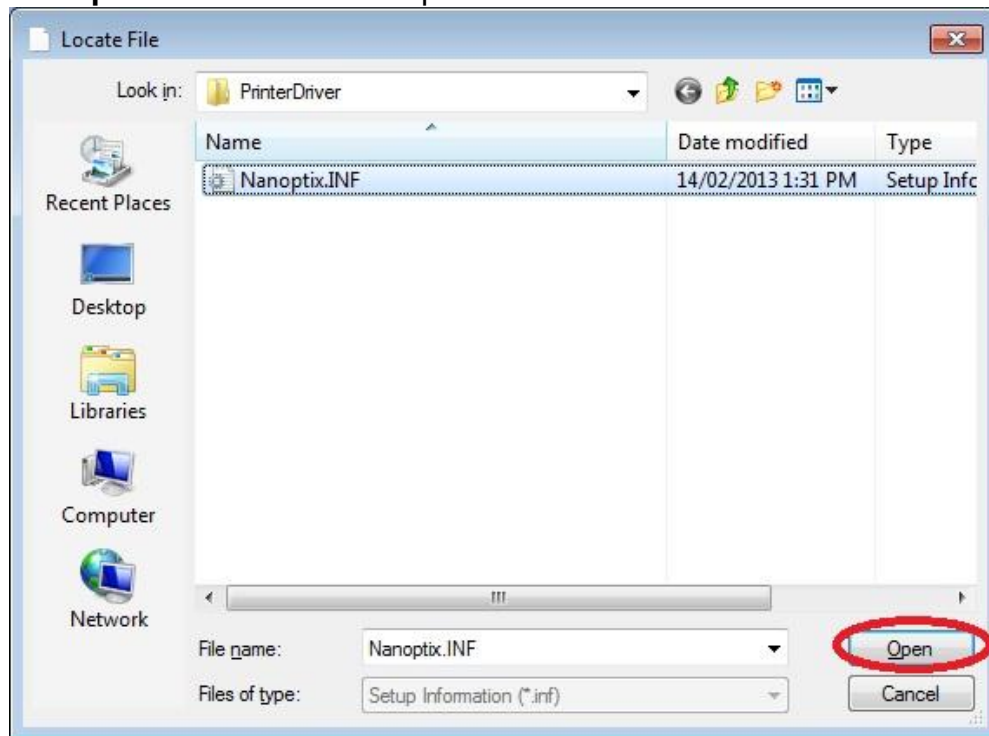
8. Click on Have Disk



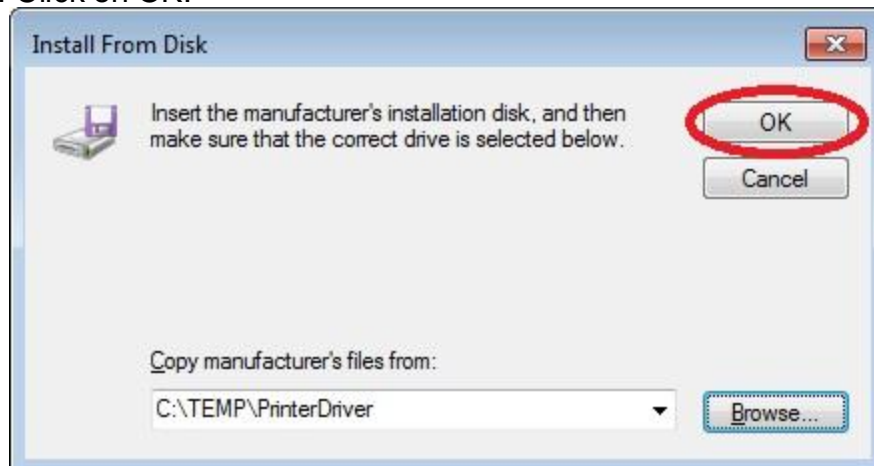
9. Click on Browse



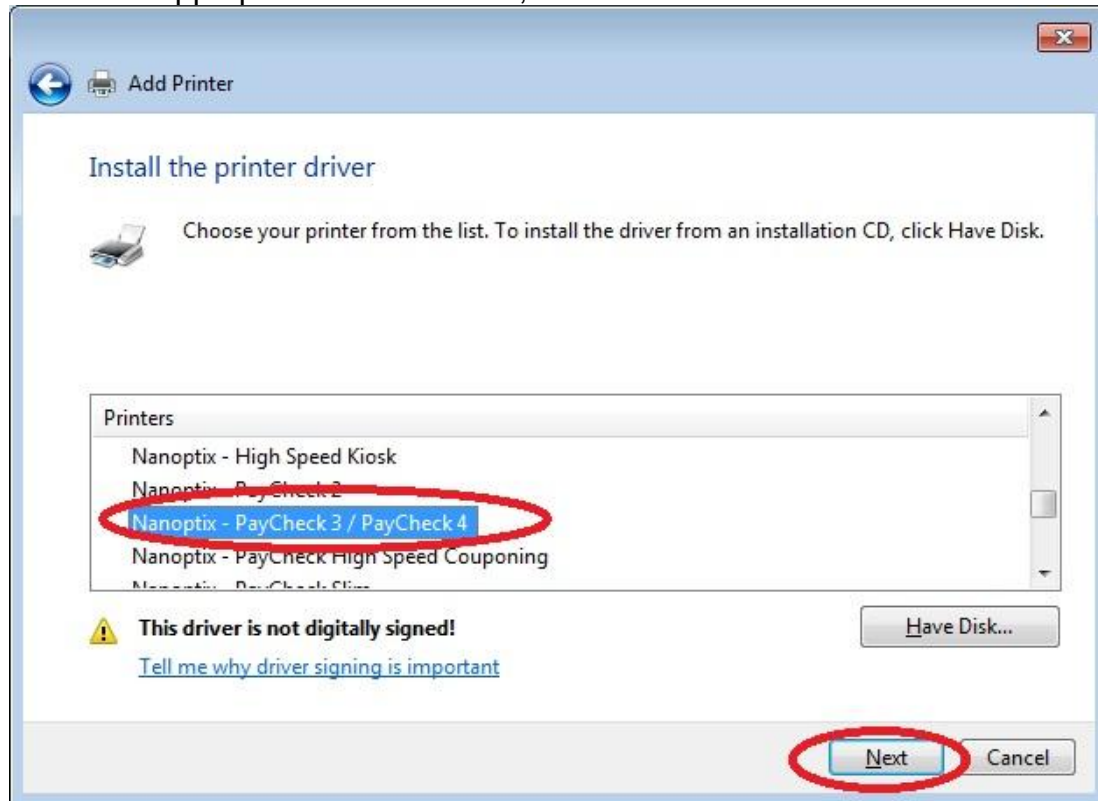
10. Select the folder where the **PrinterDriver.zip** was extract in step 2 and select the **Nanoptix.INF** file and click Open.



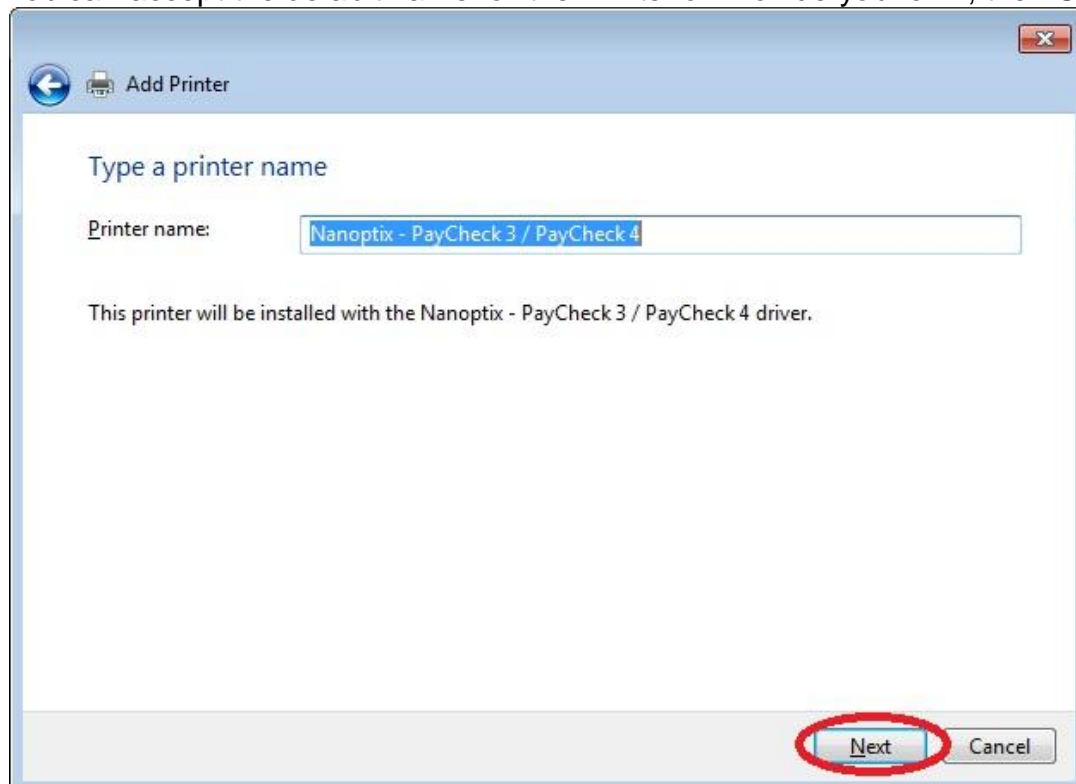
11. Click on OK.



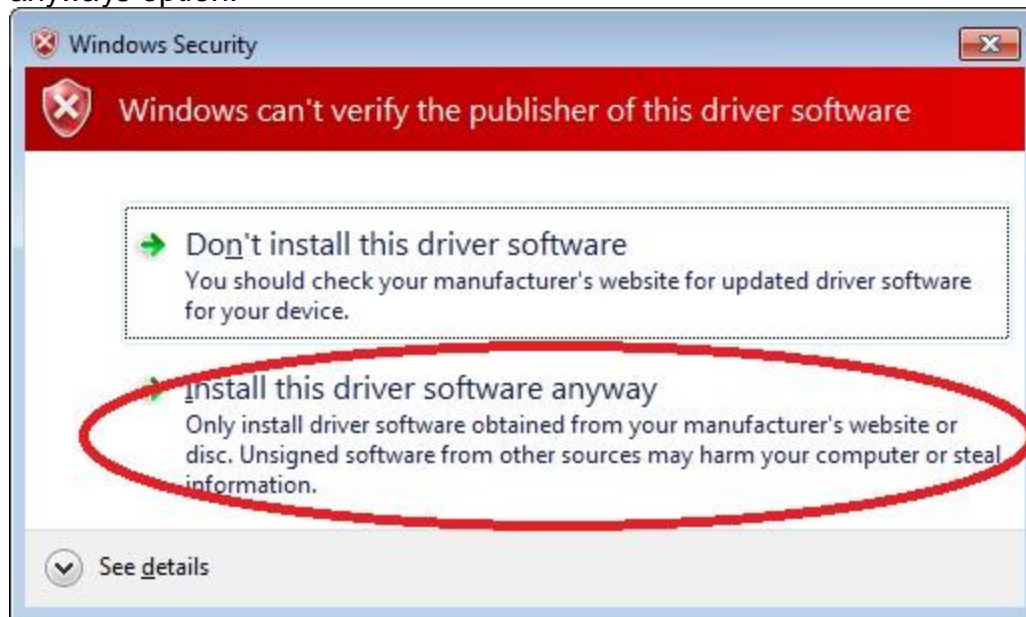
12. Select the appropriate Printer Model, and then click Next.



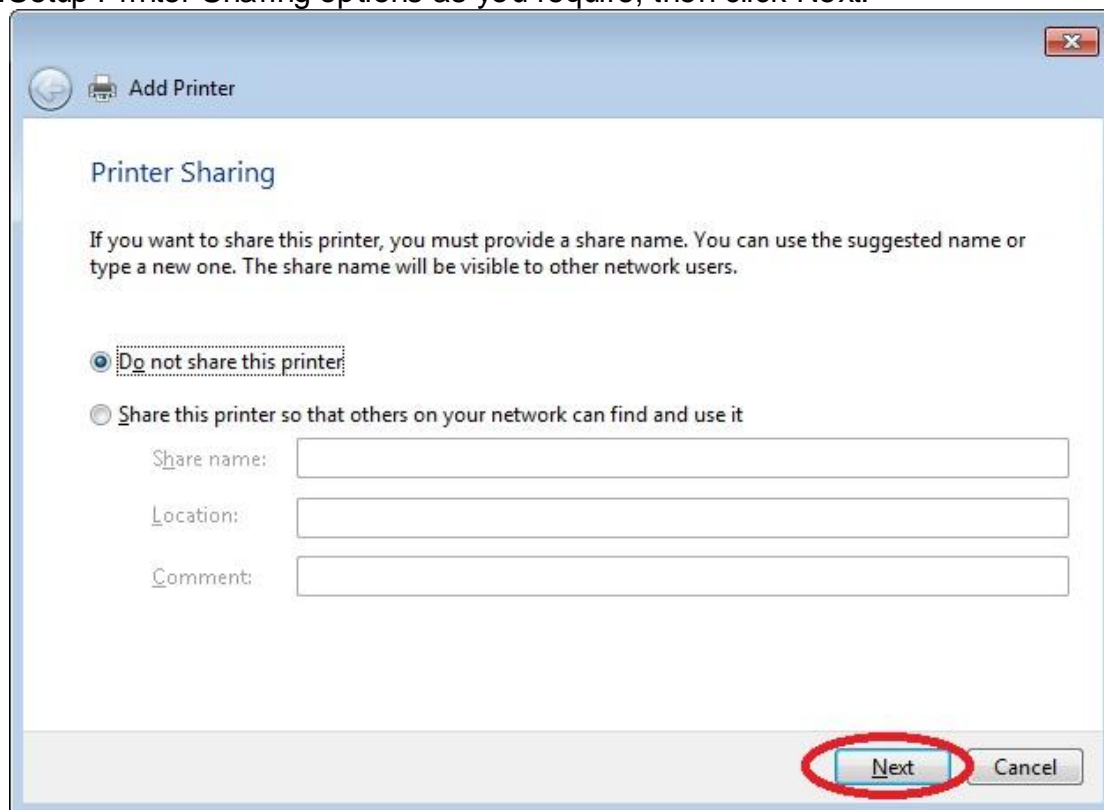
13. You can accept the default name for the Printer or Provide your own, then Click Next.



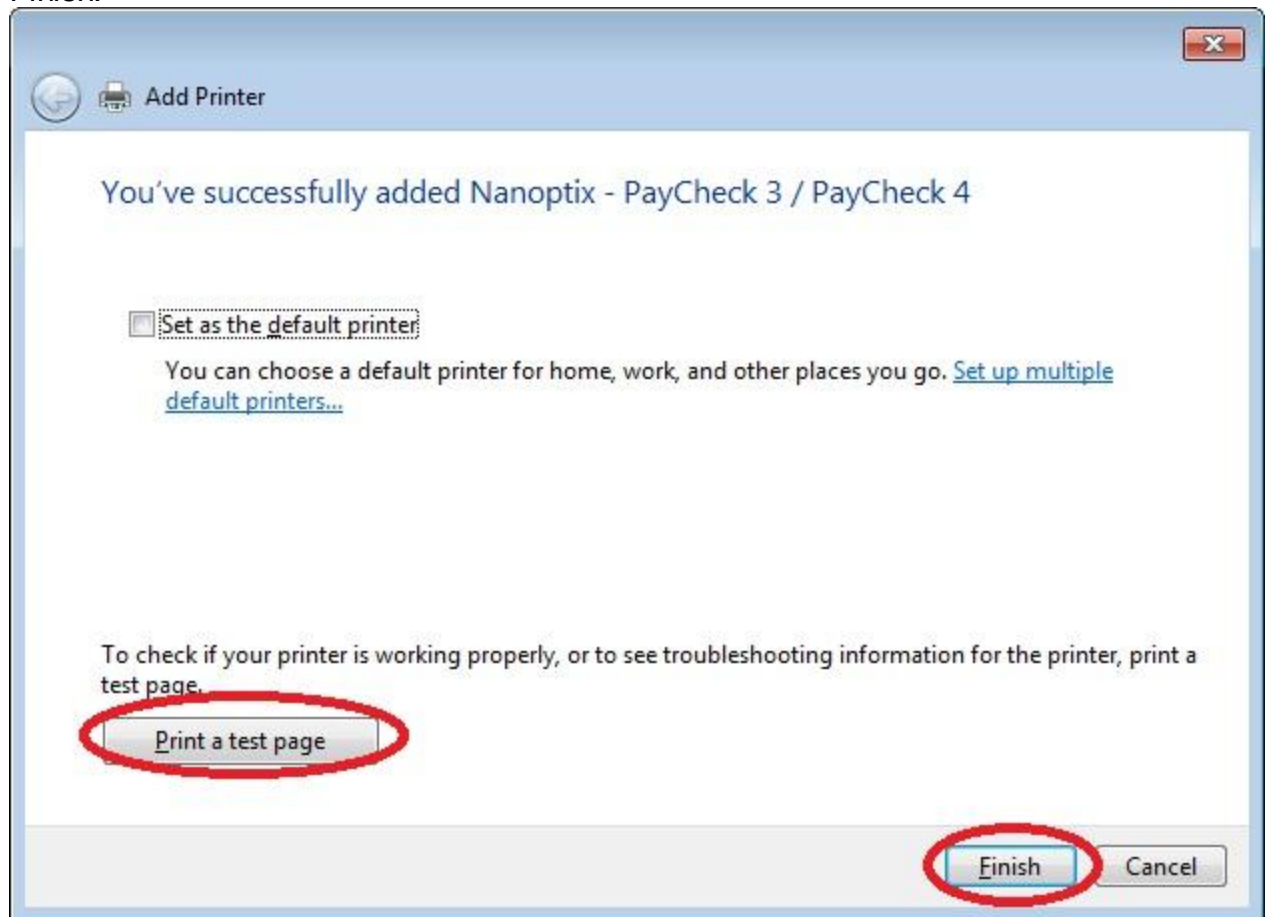
14. You may be prompt to install the unsigned driver; select Install this driver software anyways option.



15. Setup Printer Sharing options as you require, then click Next.



16. Now click the Print a test page button to verify the printer is setup properly, then click Finish.



17. Congratulations you have successfully installed the Nanoptix Printer Driver.

Appendix

A. Additional Information for Windows XP Embedded Edition.

1. Download the Windows XP Embedded missing files zip package from the Nanoptix Web Site.
http://www.nanoptix.com/techsupport/files/XPe_MissingFiles.zip
2. Save the file and extract the contents of the zip package to a local drive. For example ("C:\TEMP\xpe\").
3. Copy all the files from the "Nanoptix Printer Driver Setup Vx.x" folder into the folder you extracted the Printer Driver Setup into. For example ("C:\TEMP\PrinterDriver\").
4. If there is no ntprint.inf file present in your "C:\Windows\inf" folder then you need to copy the one include in the zip package in the "Windows\inf" folder.
For Example:
Copy "C:\TEMP\xpe\Windows\inf\ntprint.inf" to "C:\Windows\inf".
NOTE: If this file already exists DO NOT REPLACE IT.
5. Continue with the normal Printer Driver installation.