

FASTEST. SMARTEST. TOUGHEST.

PAYCHECK[®] 4[™]



Finally, there's a printer that's as fast as the gaming action on your casino floor. Only the Paycheck 4[™] Thermal Printer from Nanoptix[®] can print a ticket in just 0.6 seconds!

In fact, the paycheck 4 is so lightning fast, there's no need to rely on a "burst", like some other, lesser printers do. Also, the Paycheck 4's 8 MB of standard memory enables you to store more fonts, images, logos and barcodes, so you can personalize your players' gaming experience. With a lifespan of approximately 640,000 TITO tickets, its print head has the longest life of any in gaming. We call it fastest, smartest, toughest! You'll simply call it "awesome!"

FEATURES

- Fastest printer in gaming
- Longest print head life
- Most standard memory in gaming printers
- Standard casing footprint
- Unique illuminated anti-jamming bezel
- RoHS compliant
- Truly hot swappable
- Easy paper path access
- Durable, intuitive, modular design
- Diagnostic/firmware upgrade USB service port

BENEFITS

- Greater Customer Satisfaction
- Better Reliability and lower overall cost
- Lets you personalize with fonts, images and logos
- Fast plug-and-play replacement
- Reduces paper jams for more uptime
- Usable in all jurisdictions worldwide
- Easy replacement without powering down
- Makes maintenance fast & easy
- Gives easy access to all major components
- Allows for easy field service and upgrades

NANOPTIX



Anti-jamming Bezel



Modular design reduces maintenance

DIMENSIONS (HxWxD)

- 67x113x286

WEIGHT

- 1.5 kg (3.3 lbs)

PRINTING CHARACTERISTICS

- Print Speed
250 (9.8") per second in text mode(monochrome)
125mm (5") per second in two-color mode
- 520 dots per line
- 203 dots per inch
- 62.5mm (2.46") print zone width (near-edge printing)
- 8 dots/mm horizontal and vertical

PAPER/MEDIA

- Type: top-coated thermal sensitive
Ticket width x length
65mm (2.56") x 156mm (6.12") – TITO format
- Ticket thickness: 0.114-0.127mm (0.0045-0.005")
- Perf. Strength: 1.59 +/- 0.27kg (3.5 +/- 0.6 lbs)
- Monochrome or three 2-color choices: red/black, blue/black, green/black

POWER REQUIREMENTS

- 24 VDC at 2.4A Maximum (excluding exit lamp)
- Exit lamp: 24 VDC
- 20mA required by lighted bezel
- Bezel port can sync up to 2A

RELIABILITY

- Printhead:
100km or 100 million pulses for monochrome
(approximately 640,000 TITO tickets)
50km or 50 million pulses for 2 color

COMMUNICATION INTERFACE OPTIONS

- Bidirectional RS-232 (up to 57.6 kbps)
- Dedicated USB 2.0 Communication
- Dedicated USB 2.0 Maintenance Service Port
- Netplex protocol
- GDS protocol
- Windows driver

REGULATORY INFORMATION

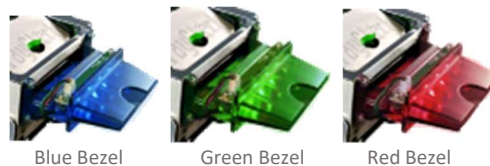
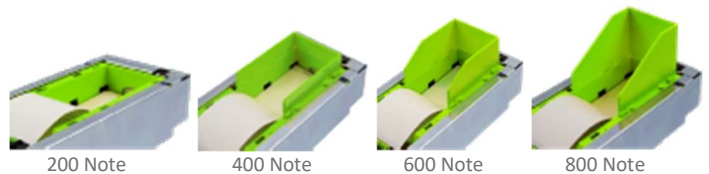
- CSA Ulc
- FCC Class B
- CE mark
- ICES

ENVIRONMENTAL

- Operating temperature: 0 to 70°C (32 to 158°F)
- Storage & shipping temperature: -20 to 75°C (-4 to 167°F)
- Operating humidity: 5 to 90% RH (non-condensing)

CONFIGURABLE OPTIONS

- Ticket tray note sizes: 200 (default), 400, 600, 800
- Multiple bezel color options: Blue, Green, Red
- Three bezel types: Long, Short, Slanted



NANOPTIX

Toll Free: +1-888-983-3030 (North America) – Direct: +1 506-384-3388 – Email: info@nanoptix.com
www.Nanoptix.com

Nanoptix and Nanoptix logo are registered trademarks of Nanoptix Inc.
All other marks are registered trademarks of their respective owners. Nanoptix reserves the right to change product specifications without notice.